

SOLUTION PROVIDER
FOR COOLING SYSTEMS

At Each Point Where the
Comfort is important

ELEVATOR AIR CONDITIONER



Turkey

Discover
the potential

www.KLIMEXS.com



GEMET

Authorized Distributor

klimexs[®]
Industrial Cooling Systems

2000W - 4000W

Cooling Capacity



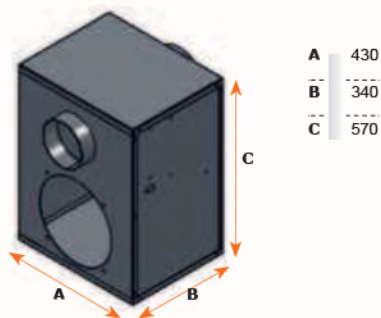
EC 2000
EC 4000

About Elevator Air Conditioners

Installation of elevator air conditioning system is made to the top of the elevator. Unit, cools down the sucked air and sends cool air inside of the elevator cabin.

This cooling system is very economic and application takes very short times. Installation is just about 15 min.

Technical Drawing

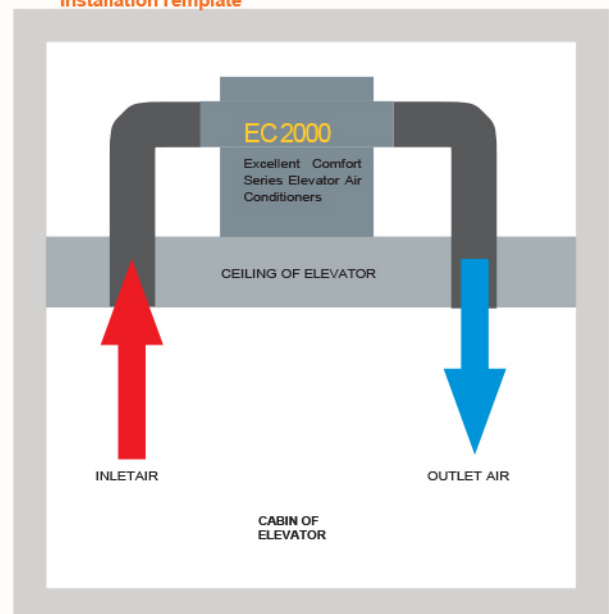


Model No	EC 2000
Cooling capacity	1980 W
rated voltage/frequency	198-252/50-60 Volt /Hz
Starting current	6.2 A
Running current	3.8 A
fuse	10 A
max. Pressure	23 BAR
Height x Width x Depth	570/430/340 (mm)
Weight	42 Kg
internal air volume	1200 m³/h
Power absorbed	610 w
Type of refrigerant	R 134a
Working conditions	+15°C /+55°C
System of protection	IP54
Mounting	Duvara montaj / Wall Mounted
Thermostat setting	35 °C
Compressor	Danfoss
Fans	EbmPapst

** Used Components

ebmpapst *Danfoss*

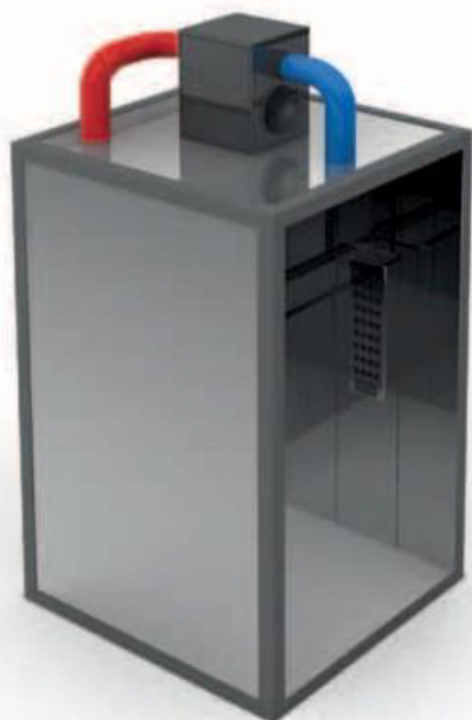
Installation Template



Elevator Air Conditioner

Excellent Comfort

Elevator Air Conditioner



Advantages

- 1 You can set the desired cabin temperature via digital thermometer, thermostat.
- 2 Air conditioner is installed to the top of the elevator cabin, installation time is 15 min.
- 3 2 sections/holes should be opened for suck and blowing to install the device.
- 4 Installation finishes after mounting air distributor vent on the ceiling sheet where illumination armatures placed.
- 5 Energizing the device, is enough to work it for years without any problem.
- 6 Undrained comprised water vapors in the system.
- 7 Temperature control device is mounted on the air conditioner.



Elevator Electric Panel Air Conditioner

Panel Air Conditioner

What is the panel air conditioner?

When summer nears, panels inner temperature increases significantly depending on ambient temperature also. Depending on this double temperature increases, breakdowns are inevitable. Generally fan applications are made for this problem. But this carries all the ambient dust and humidity inside of the panel. This prevents healthy working of components and may cause of fire.

Solution: Panel Type Air Conditioner Application

Airflow Diagram



350W - 4000W
Cooling Capacity



**Technical Data, Pictures; which used at product or it's component are given by manufacturer. All responsibility belong to suppliers. Manufacturer and supplier has right to change the products or used components without notifying earlier.*

***Component brands may Show difference at series production. If there is brand choice, should be noticed at order in writing.*



INDUSTRIAL COOLING SYSTEMS

PROJECT MANAGEMENT, PROJECT PRODUCTION
CONSULTANCY

PROJECT PRODUCTION
and SALE

SERVICE CONSULTANCY
AFTER SALE

TECHNICAL SERVICE and
SPARE PART SUPPORT

MAINTENANCE
DEAL



AUTHORIZED DISTRIBUTOR

Email: gemet.infor@gmail.com

Tel: 024 668 669 09

Văn phòng giao dịch:

Tầng 2, tòa 27A1, Greenstars Complex,
234 Phạm Văn Đồng, Cổ Nhuế 1,
Bắc Từ Liêm, Hà Nội.